

ServiceCase SC300

Analysis kit for the quick determination of the actual process state of a cleaning bath with alkaline kolb detergents

Part number: 090582-H300

CLEANING TECHNOLOGY

Made in Germany



Optimal and safe cleaning processes can only be ensured if the operating condition of the cleaning bath is regularly monitored / checked regarding its current cleaning power. With the content of the service case SC300 this review can be done easily and quickly.

Approx. 85 ml have to be taken with the enclosed bailer from the well stirred cleaning bath, put into the shaking cylinder and be filled up with 15 ml of BA15 analysis fluid. Then the cylinder has to be tightly closed and well shaken. After the sample has rested for 15 minutes the colors of the separate phases display the process status of the cleaning bath.

The analysis data sheet included in the case cover then gives recommendations for possible action.

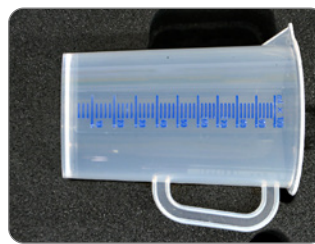
Case content



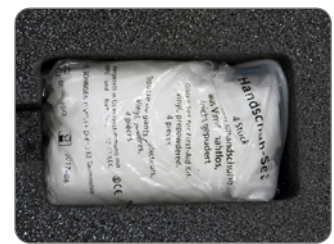
BA15 analysis fluid



Shaking cylinder



Bailer



Gloves

Phase separation example for the quick reliability analysis of the cleaning detergent:

Left: fresh detergent / ready for operation

Right: detergent exhausted / exchange required

