



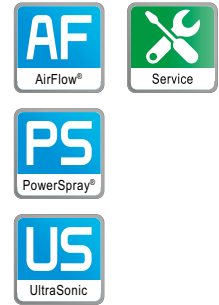
MaintClean®

Machine maintenance cleaner for the removal of limescale and all biology from electronic cleaning systems

Part No. 090630-CN10 // Contents: 2 x 5 l packaging unit

CLEANING TECHNOLOGY

Made in Germany



Application overview

The cleaner removes residues from the soldering process and maintains the process elements of the machine. Beside limescale, bacteria and fungi are removed. The vapor phase also optimally cleans areas that normally are difficult to access for liquids.

MaintClean® can be added to the process rinsing water and as well, mixed with tap water, filled into the cleaning tank for a tank and circuit cleaning during a full maintenance service.

One container content is sufficient for a cleaning process for tank sizes up to 75 l.

Please use only in accordance with the **kolb** handling instructions and in compliance with the safety data sheet. Application information can also be requested via info@kolb-ct.com.

Technical data	
Color	yellow-orange
pH-value at 20 °C	< 1
Conductance at 20 °C	< 100 µS/cm
Flash point	> 100 °C
VOC content	< 20 %
Water solubility	fully soluble
Application for maintenance	5 l to tank volume 75 l max.
Application in process	20 - 50 ml to 10 l water
Application temperature	20 - 45 °C
Storing (in original container)	10 - 30 °C
CLP / GHS	GHS 05
MaintClean® maintains the cleaning system, extends its operating life and is 90% biodegradable after neutralization. Concentrate for mixing with water	

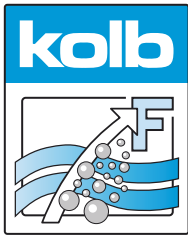
kolb MaintClean® is compliant with all worldwide legal regulations and directives (REACH, RoHS, TSCA etc.) on the basis of own internal checks, analyses provided by suppliers and / or material certifications of the raw materials used in the production of kolb Cleaning Technology GmbH.

Contaminations	
Lime	++
Bacteria	++
Fungi	++
Dust / Grease / Oil	++
Machine technologies	
Spray-in-air systems	++
Spray-in-immersion systems	++
Air-in-immersion systems	++
Ultrasonic systems	++
Manual application	++

++ = ideal for application, + = recommended, o = optionally applicable, – = not recommended

Note: The spreadsheet only shows a general overview of the product specifications.

Cleaning tests are reasonable to determine the optimum cleaner configuration. Such tests may be carried out directly at the **kolb** demonstration center in Willich / Germany or Shanghai / China or can be initiated by contacting your local **kolb** partner.



MaintClean®

Machine maintenance cleaner for the removal of limescale and all biology from electronic cleaning systems

Part No. 090630-CN10 // Contents: 2 x 5 l packaging unit

CLEANING TECHNOLOGY

Made in Germany



Maintenance cleaning for cleaning systems

Lime deposits in water-bearing systems can lead to malfunctions and even mechanical damage and thus cause considerable costs.

Limescale can have a corrosive effect and thus damage polymer and metal parts installed in the system after a certain period of time.

Lime buildup can cause malfunction, e.g. on nozzles or moving parts (e.g. nozzles).

Biological entries in the rinse water through workpieces, boards, solder frames, etc. can lead to significant odor nuisance. MaintClean® has a disinfecting effect here. Accumulations of fungi and bacteria are neutralized and removed.

kolb MaintClean® removes limescale as well as soldering residues and maintains the process elements of the machine. In addition, the cleaner removes bacteria and fungi. Through its vapor phase, it also reaches areas that normally are difficult to access for liquids.

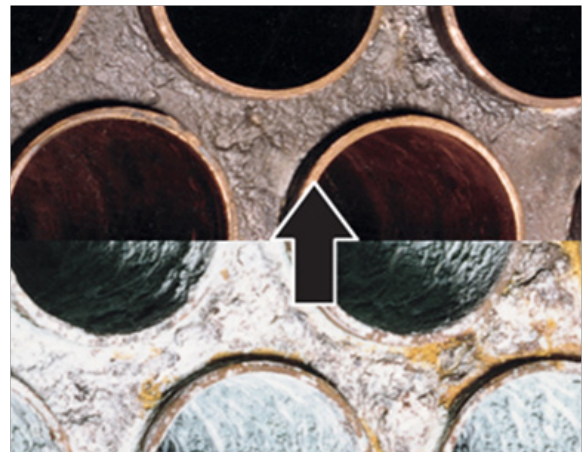
MaintClean®

- cleans the cleaning system from the inside
- removes lime, bacteria / fungus and particles from the rinse water tank (s)
- removes limescale, bacteria / fungi, dusts and particles in the gas phase
- protects and maintains rubber and metal parts
- prevents malfunctions
- extends the life of the machine

MaintClean® can be added to the process rinse water as well as be applied to the cleaning tank for cycle cleaning during a maintenance cycle with ctap water. (One container content is sufficient for a cleaning process for tank sizes up to 75 l.)

MaintClean® should not be used together with chlorine-containing cleaners.

kolb recommends cleaning a cleaning system twice a year with MaintClean®.



Limescale before and after treatment with MaintClean®



Bacterial deposits into rinsing water through cleaning goods